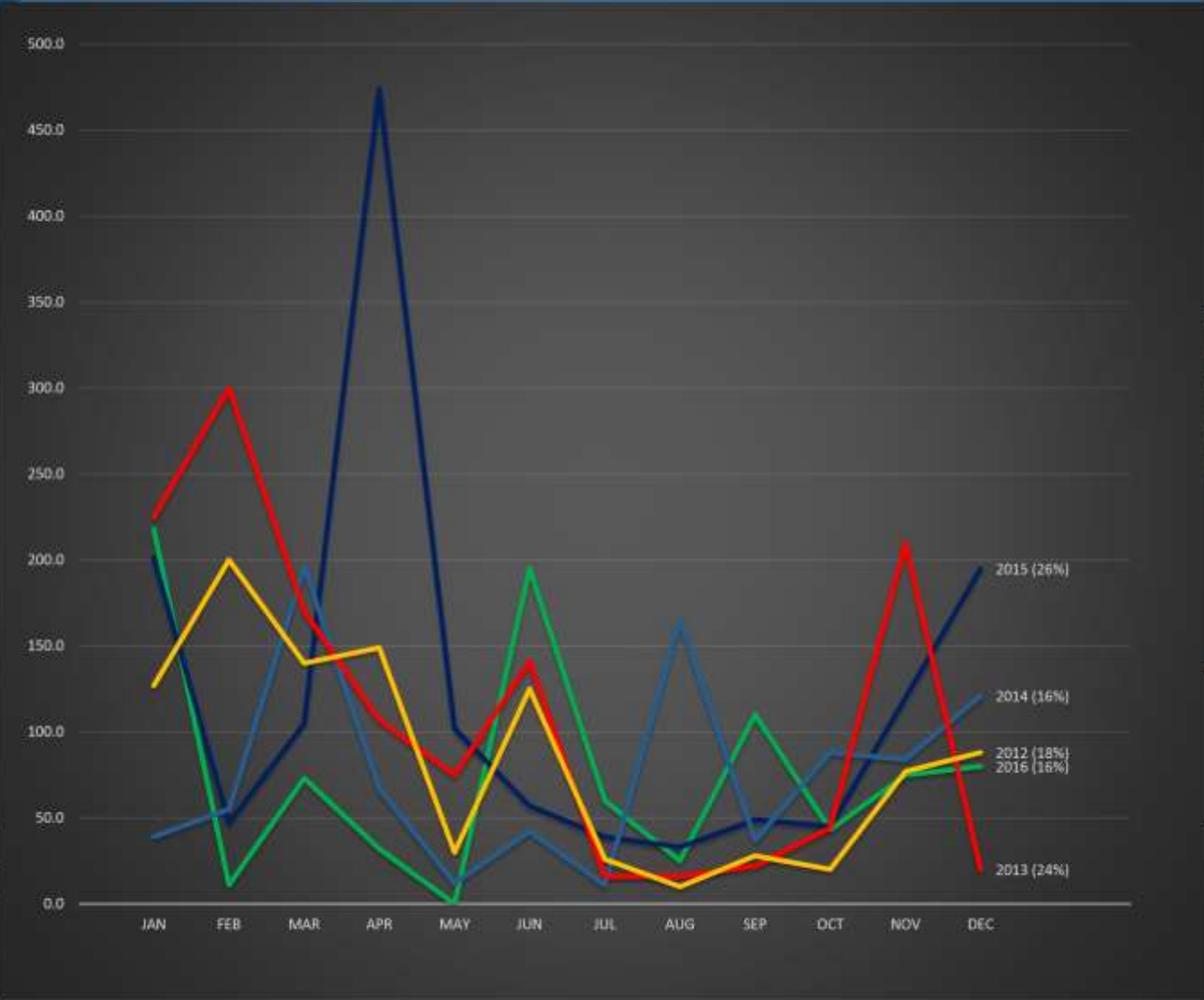


**\*Please Note:**

These measurements are indicative of our local collective instruments and should not be used as an official source.

Silver Gully Rainfall (mm)

Last 5yrs



**\*PLEASE NOTE:**  
These measurements are indicative of our local collective instruments and should not be used as an official source.

Rainfall Data (mm)

Year	JAN	FEB	MAR	APR	MAY	JUN	JUL	AUG	SEP	OCT	NOV	DEC	YR TOTAL	5yr %
2017													0.0	0%
2016	218.0	11.0	73.0	32.0	0.0	195.0	60.0	25.0	110.0	43.0	75.0	80.0	922.0	16%
2015	201.0	47.0	105.0	474.0	102.0	57.0	39.0	33.0	49.0	45.0	120.0	195.0	1467.0	26%
2014	39.0	55.0	196.0	67.0	12.0	42.0	11.0	165.0	37.0	88.0	84.0	121.0	917.0	16%
2013	225.0	300.0	170.0	107.0	75.0	141.0	16.0	16.0	22.0	44.0	210.0	20.0	1346.0	24%
2012	127.0	200.0	140.0	149.0	30.0	125.0	26.0	10.0	28.0	20.0	77.0	88.0	1020.0	18%
2011	73.0	68.0	135.0	162.0	141.0	233.0	157.0	87.0	183.0	82.0	264.0	71.0	1656.0	
2010	100.0	105.0	124.0	56.0	100.0	95.0	52.0	35.0	35.0	93.0	93.0	4.0	892.0	
2009	38.0	238.0	22.0	110.0	100.0	67.0	21.0	10.0	10.0	132.0	38.0	81.0	867.0	
2008	147.0	248.0	89.0	203.0	13.0	129.0	37.0	57.0	157.0	63.0	109.0	96.0	1348.0	
2007	54.0	232.0	134.0	132.0	45.0	571.0	26.0	171.0	55.0	22.0	197.0	136.0	1775.0	
2006	101.0	29.0	100.0	11.0	17.0	57.0	64.0	67.0	207.0	14.0	57.0	127.0	851.0	
2005	121.0	37.0	80.0	49.0	67.0	143.0	18.0	2.0	65.0	74.0	118.0	38.0	812.0	
2004	73.0	132.0	82.0	20.0	18.0	6.0	27.0	30.0	33.0	236.0	61.0	82.0	800.0	
2003	14.0	130.0	36.0	108.0	224.0	25.0	46.0	26.0	0.0	26.0	105.0	54.0	794.0	
2002	70.0	250.0	150.0	61.0	86.0	25.0	18.0	37.0	34.0	12.0	42.0	118.0	903.0	
2001	54.0	285.0	202.0	112.0	146.0	0.0	54.0	40.0	19.0	55.0	90.0	46.0	1103.0	

	JAN	FEB	MAR	APR	MAY	JUN	JUL	AUG	SEP	OCT	NOV	DEC	TOTAL
Monthly Totals:	810.0	613.0	684.0	829.0	219.0	560.0	152.0	249.0	246.0	240.0	566.0	504.0	5672.0